

From AMISTAD

# DRY YOUR TEARS, AFRIKA

(For Choir with Concert Band Accompaniment and Optional Strings)

Music by JOHN WILLIAMS

Vocal Adaptation by Audrey Synder

Band Accomp. and Opt. Strings adapted by Paul Lavender

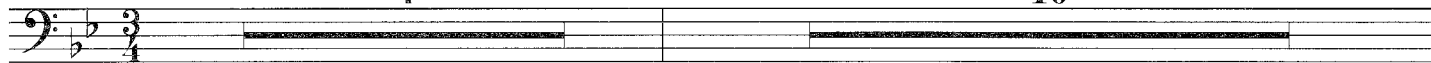
## TROMBONE 2

Ben Ritmato

4

5

10



15

9

24

5

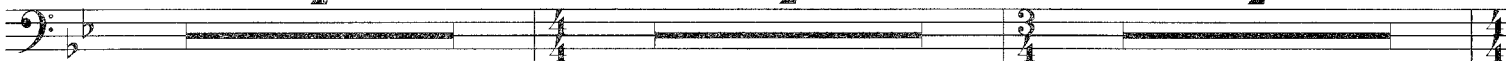


29

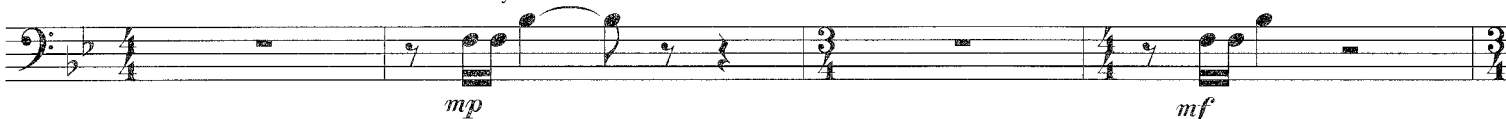
2

2

2

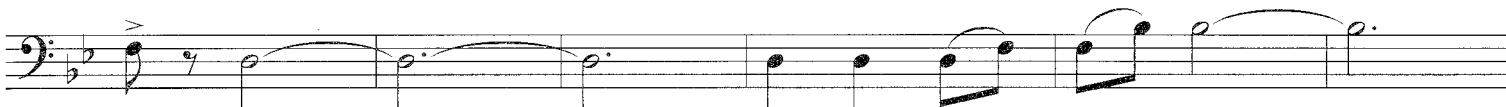


One Player

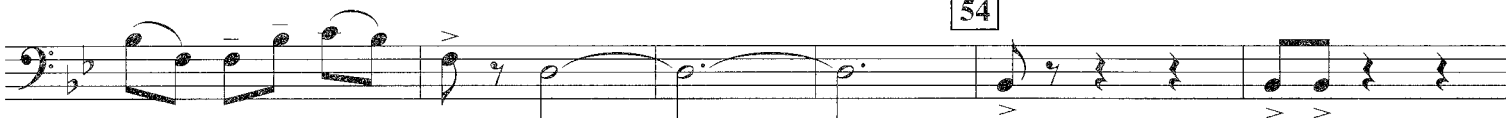


40

All



54



Copyright © 1997 Songs of SKG (BMI)

This arrangement Copyright © 1998 Songs of SKG (BMI)

Worldwide Rights for Songs of SKG Administered by Cherry River Music Co. (BMI)

International Copyright Secured All Rights Reserved

TROMBONE 2

64

First musical staff in bass clef, key of B-flat major. It begins with a whole rest, followed by quarter notes G2, F2, and E2. A *cresc.* marking is placed below the staff. The staff then continues with eighth notes G2, F2, E2, D2, C2, B1, and A1, with a *mf* dynamic marking.

69

Second musical staff in bass clef, continuing the eighth-note pattern from the first staff. It ends with a quarter rest and a quarter note G2. A *mf* dynamic marking is present.

Third musical staff in bass clef, featuring a mix of eighth and quarter notes, including a half note G2. A *cresc.* marking is at the end.

Fourth musical staff in bass clef, continuing the melodic line with various note values and rests. A *cresc.* marking is at the end.

80

Fifth musical staff in bass clef, starting with a quarter note G2. It includes a *f* dynamic marking, a *cresc.* marking, and a *ff* dynamic marking. The staff changes to 3/4 time and ends with a quarter note G2.

Sixth musical staff in bass clef, continuing the melodic line with quarter and eighth notes.

89

Seventh musical staff in bass clef, featuring a series of quarter notes and rests.

Slower 3

Eighth musical staff in bass clef, starting with a quarter note G2. It includes a *rit.* marking, a *a tempo* marking, and a *f* dynamic marking. The staff changes to 3/4 time and ends with a quarter note G2. A *Slower 3* marking is above the staff.

Tempo I

Ninth musical staff in bass clef, starting with a quarter note G2. It includes a *rit.* marking, a *a tempo* marking, and a *f* dynamic marking. The staff changes to 3/4 time and ends with a quarter note G2. A *Tempo I* marking is above the staff.

Slower

Tenth musical staff in bass clef, starting with a quarter note G2. It includes a *ff* dynamic marking, a *fp* dynamic marking, and a *Slower* marking.